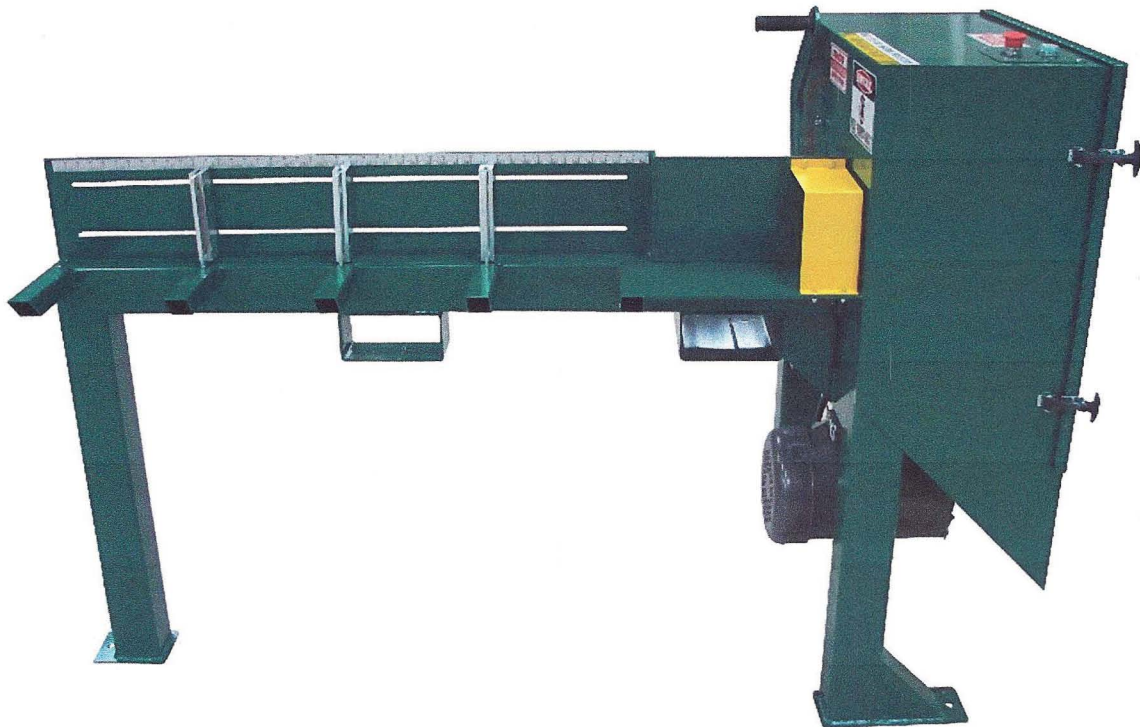


# Smart Products

---

Manual Trim Saw

Operators Manual



Smart Products  
3401 North Commerce Drive  
Muncie, Indiana 47303

## Smart Products

### Manual Trim Saw

#### Installation Instructions

- Your trim saw is delivered to you ready for installation, blade on.
- Verify your electrical power prior to installation.

**Caution: IMPROPER VOLTAGE MAY RESULT IN DAMAGE TO MOTOR AND OR ELECTRICAL COMPONENTS**

- A certified electrician should install power to machine.
- Turn the disconnect on the side of the electrical panel ON.
- Pull the stop button OUT.
- Start machine momentarily, check rotation. The blade should turn clockwise looking from the operator side. If it is turning wrong have the electrician change rotation.
- You're ready to use your trim saw, If you have any trouble with this procedure call Smart Products at 1-800-401-0099

## Smart Products

### Manual Trim Saw

#### Operation Instructions

- Your new Manual Trim Saw comes with a blade installed.
- Have a licensed electrician hook up the power.
- Set board stops the desired distance from blade.
- Make sure the door is closed.
- Make sure the nut on the saw is tight.
- Start the saw momentarily to check rotation.
- The saw should be cutting downward.
- If the rotation is wrong have an electrician change it.
- Take a handful of boards to be trimmed, up to 6 in. high and put them against the desired length stop and pull the saw thru the boards. A slow steady pull is better than quick jerks. The scrap falls away and the boards are ready to be stacked.
- The blade is 18" dia.—30 nail resistant teeth—1" dia. center hole

## Smart Products

### Manual Trim Saw

### Safety Instructions

- Use a licensed electrician to hook power to your machine
- Read and understand all safety stickers and warnings
- Wear hearing and eye protection
- Do not wear loose clothing
- Keep away from blade
- Door must be closed before operating
- Read and understand Operating Instructions
- Do not reach your hands in the area protected by the yellow guard
- Do not modify the machine in any way.



# Smart Products

## Limited Warranty

All parts and workmanship are covered by warranty for a period of one year.

### TO QUALIFY FOR THIS WARRANTY

Any Smart Product must be purchased from the sales department of Smart Products or through authorized agents of Smart Products. Purchase from any other source will be invalid.

### WHAT SMART PRODUCTS WILL REPAIR OR REPLACE UNDER WARRANTY

Smart Products will replace any defective parts or material under normal use during the applicable warranty time period. Warranty replacements will be made without charge for parts. Anything replaced under warranty becomes the property of Smart Products and must be returned within 10 days. All parts replaced under warranty will be considered as part of the original warranty and any warranty on those parts will expire coincident with original product warranty.

### TO OBTAIN WARRANTY SERVICE

You must contact Smart Products, request warranty replacement and send defective part to Smart Products. Smart Products will send replacement part at time of request. However, in the event the defective part is not returned to Smart Products within ten (10) day time limit the part will be billed at full price. To receive replacement parts please contact:

Smart Products  
3401 North Commerce Drive  
Muncie, IN 47303  
Phone (765)284-9545 Toll Free (800) 401-0099 Fax(765) 284-7270  
Email [smartpro@smartproductsinc.com](mailto:smartpro@smartproductsinc.com)

### EXCLUSIONS

This warranty does not extend to parts or materials misused or used for any other purpose than intended or by accident and / or collision, neglect, the incorporation of, or use of, unsuitable attachments or parts, the unauthorized, alteration of any part or cause other than defects in material, workmanship or parts.

### DISCLAIMER OF CONSEQUENTIAL DAMAGE AND LIMITATION OF IMPLIED WARRANTIES

Smart Products disclaims any responsibility for loss of time or use of any equipment, transportation, commercial loss, or any other equipment, transportation, commercial loss, or any other incidental or consequential damage, any implied warranties are limited to the duration of this written limited warranty.

## Installing a new blade

### MANUAL TRIM SAW

- Disconnect power
- Open door
- Open access door ( located behind handle used to pull saw)
- Use a 1 1/2 in. socket and remove the LH nut (clockwise)
- Remove the saw collar
- With the door open reach inside the saw and remove the saw blade
- Lower it down to rest in the sawdust chute
- Pull the handle forward like you're making a cut
- Now you can lift the blade out
- Set a new blade in the saw dust chute and let the handle go back
- Lift the blade up and place it on the saw arbor making sure the teeth are pointing in the direction of the rotation
- Replace the saw collar
- Replace the nut and tighten with socket
- Close the door
- Turn on power

Smart Products

MANUAL TRIM SAW

Electrical Panel

1. Fuse Block

2. Fuses

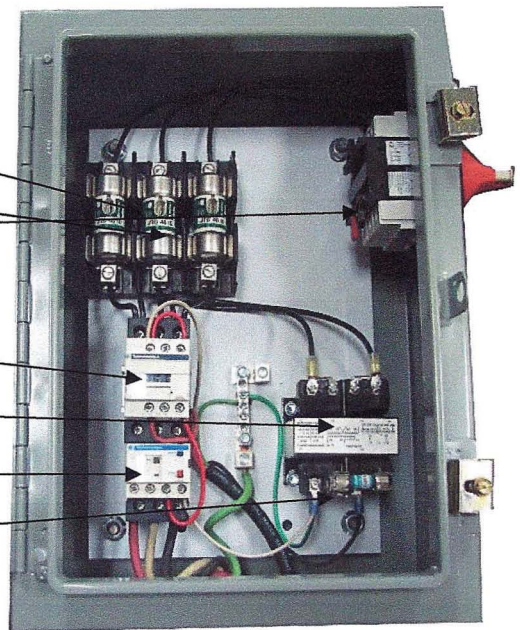
3. Disconnect

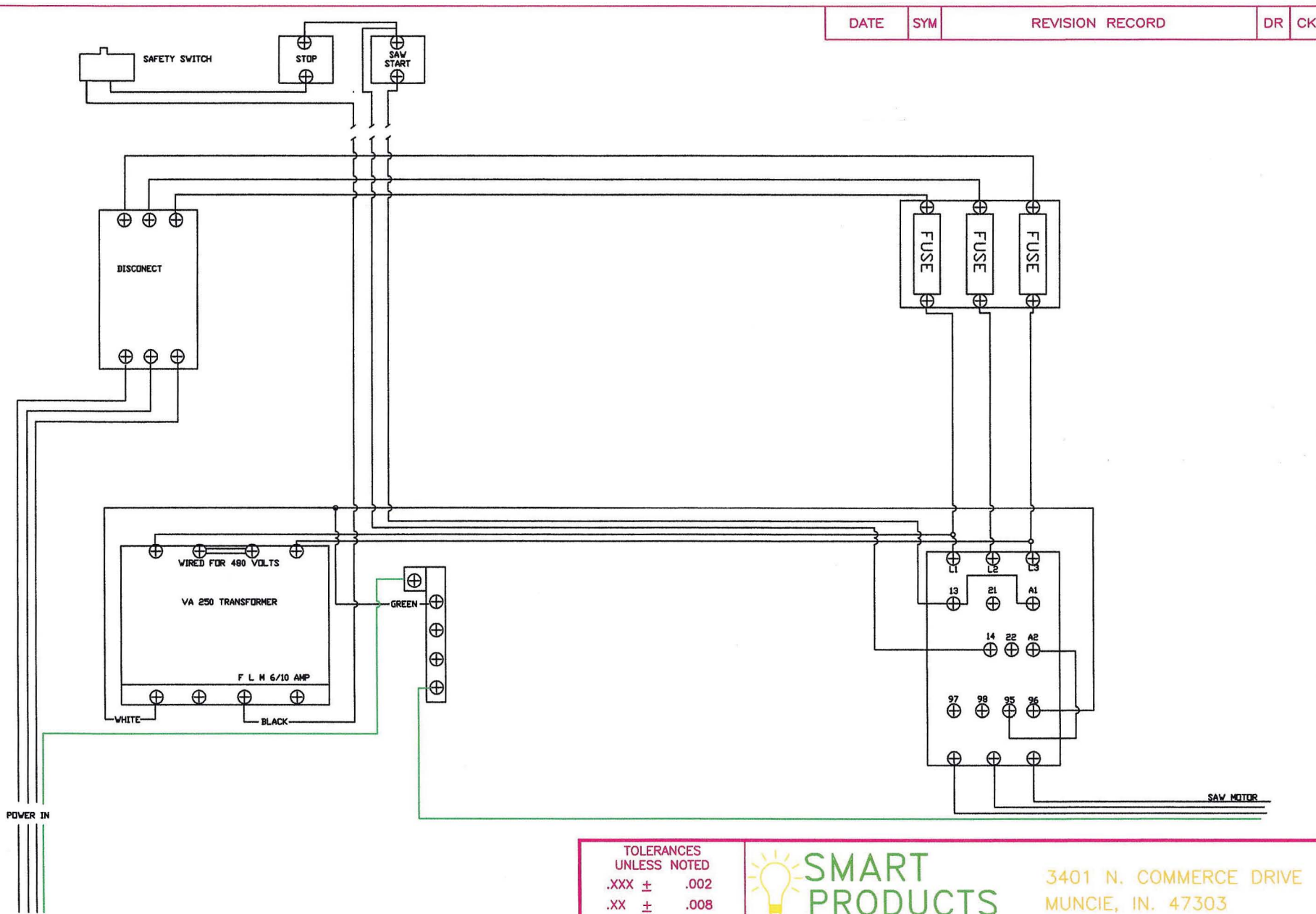
4. Contactor

5. Transformer


6. Thermal Overload

7. Fuse





DATE	SYM	REVISION RECORD	DR	CK
------	-----	-----------------	----	----

TOLERANCES UNLESS NOTED .XXX ± .002 .XX ± .008 .X ± .015 FRACT. ± 1/32 ANGLE ± .5 DEG		 <b>SMART PRODUCTS</b>		3401 N. COMMERCE DRIVE MUNCIE, IN. 47303	
MODEL MANUAL TRIM		SCALE	DATE 3-7-08	DRW. BY TRW	CK BY
TITLE ELECTRIC PANEL			DRAWING NO. ELECTRICAL 5		REVISION A