

SMART PRODUCTS  
OPERATORS MANUAL  
2-MAN DISMANTLER



3401 N. COMMERCE DRIVE  
MUNCIE, INDIANA 47303

1-800-401-0099

## Smart Products

### Pallet Dismantler

#### Installation Instructions

- Your pallet dismantler is delivered to you ready for installation, blade on.
- Verify your electrical power prior to installation.

**Caution: IMPROPER VOLTAGE MAY RESULT IN DAMAGE TO MOTOR AND OR ELECTRICAL COMPONENTS**

- A certified electrician should install power to machine.
- With the knob on the hydraulic blade tensioner closed and the ball valve in the line open, tension the blade to 2000 psi. Close ball valve.
- Turn the disconnect on the side of the electrical panel ON.
- Pull the stop button OUT.
- Start machine momentarily, check rotation. The blade should move toward the saw fence. If the blade moves away from the saw fence, have the electrician change rotation.
- You're ready to use your pallet dismantling machine, If you have any trouble with this procedure call Smart Products at 1-800-401-0099

# Smart Products

## 2-MAN DISMANTLER

### Operating Instructions

- Tension blade to 2000 psi.
- Air pressure in tires should be 50-55 psi.
- Put on safety equipment, safety glasses, ear protection, gloves, etc.
- Turn disconnect on.
- Pull out red stop button and start saw.
- Stop saw, turn off disconnect and remove doors.
- Check to see if blade is centered on the tires, if not go to section on changing and tracking blade
- Put doors on, turn disconnect on, pull out red stop button and start saw.
- You are ready to dismantle pallets
- Adjust table about 1/4 in plus the thickness of the deck boards below the blade.
- Place a pallet on the table UPSIDE DOWN .
- With the pallet against the fence, Operator #1 (O-1) starts the blade into the pallet with the pallet at a slight angle starting the blade into the right corner of the pallet rather than straight on. It helps to then wiggle the pallet side to side to get through the board.
- O-1 pushes the pallet 1/2 way thru while wiggling the pallet side to side.
- O-1 lets go of the pallet and O-2 pulls it on thru. **Only one person should touch the pallet at a time. Never reach closer than 12 inches from the blade.**
- O-2 flips the pallet over and places it on top of the canopy guard.
- O-1 pulls the pallet off the canopy and starts the right corner into the blade, keeping the pallet against the fence and pushes it 1/2 way thru.
- O-2 pulls it on thru.
- O-2 clears the lumber from the table while O-1 gets another pallet.
- Repeat

## Smart Products Safety Instructions

### 2-MAN PALLET DISMANTLER

- Use a licensed electrician to hook power to your machine
- Read and understand all safety stickers and warnings
- Wear hearing and eye protection
- Do not wear loose clothing
- Keep away from blade
- Doors must be in place before operating
- Read and understand Operating Instructions
- If the blade comes off during operation, disconnect power before replacing it
- If debris gets wedged in the fence during operation, disconnect power before clearing it out
- Do not reach your hands closer than 12 inches from the blade
- Do not modify the machine in any way.

#### Specifications

- Tire air pressure 50 p.s.i
- Blade tension 2000 p.s.i.

# Smart Products

## Limited Warranty

All parts and workmanship are covered by warranty for a period of one year.

### TO QUALIFY FOR THIS WARRANTY

Any Smart Product must be purchased from the sales department of Smart Products or through authorized agents of Smart Products. Purchase from any other source will be invalid.

### WHAT SMART PRODUCTS WILL REPAIR OR REPLACE UNDER WARRANTY

Smart Products will replace any defective parts or material under normal use during the applicable warranty time period. Warranty replacements will be made without charge for parts. Anything replaced under warranty becomes the property of Smart Products and must be returned within 10 days. All parts replaced under warranty will be considered as part of the original warranty and any warranty on those parts will expire coincident with original product warranty.

### TO OBTAIN WARRANTY SERVICE

You must contact Smart Products, request warranty replacement and send defective part to Smart Products. Smart Products will send replacement part at time of request. However, in the event the defective part is not returned to Smart Products within ten (10) day time limit the part will be billed at full price. To receive replacement parts please contact:

Smart Products

3401 North Commerce Drive

Muncie, IN 47303

Phone (765)284-9545 Toll Free (800) 401-0099 Fax(765) 284-7270

Email [smartpro@smartproductsinc.com](mailto:smartpro@smartproductsinc.com)

### EXCLUSIONS

This warranty does not extend to parts or materials misused or used for any other purpose than intended or by accident and / or collision, neglect, the incorporation of, or use of, unsuitable attachments or parts, the unauthorized, alteration of any part or cause other than defects in material, workmanship or parts.

### DISCLAIMER OF CONSEQUENTIAL DAMAGE AND LIMITATION OF IMPLIED WARRANTIES

Smart Products disclaims any responsibility for loss of time or use of any equipment, transportation, commercial loss, or any other equipment, transportation, commercial loss, or any other incidental or consequential damage, any implied warranties are limited to the duration of this written limited warranty.

## Installing a new blade

Unfold the new blade. Make sure the teeth are pointing in the right direction. (toward the fence)

Fig. A



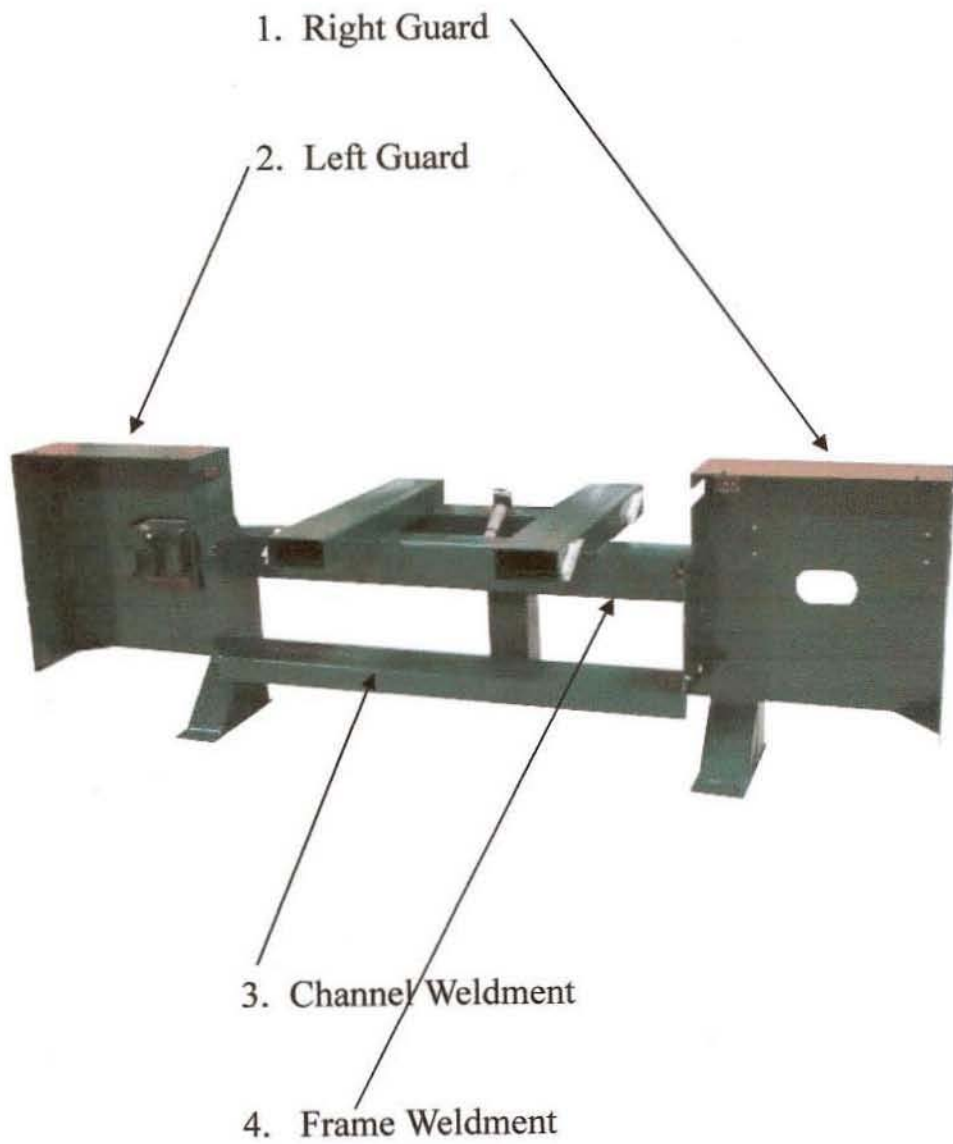
- To remove the blade open the ball valve
- Open the hydraulic pump valve
- Remove the old blade
- Install the new blade and center it on the tires making sure it is in the blade guides
- Close the hydraulic pump valve
- Pump the jack to 500 PSI
- Start the machine and run for a few seconds
- Check to see if blade is centered on the tires
- If not go to Fig. B
- If yes check to see if the blade is 1/16 in. from rear blade guide bearing
- To adjust, loosen the blade guide adjusting handle and push the blade guide back
- Run the machine for a few seconds
- Check again to see if the blade is centered on the tires
- Adjust the blade guide till the rear bearing is 1/16 in. from back of blade
- Do this on both wheels
- Pump the pressure to 2000 psi
- Close the ball valve

Fig. B



- To track the blade you will use these four bolts at 12, 3, 6, and 9 o'clock
- If the blade is running forward of center on the tire, loosen the blade guide adjusting handle and push the blade guides back. Do this on both wheels
- With at least 500 psi on the hydraulic pump run the machine for a few seconds, check the blade
- Loosen the lock nuts on all four bolts
- Hold a straight edge vertically on the face of the wheel and measure the distance at the top and bottom from the straight edge to the back of the cabinet. It should be the same
- If not use the bolts at 12:00 and 6:00 to correct it
- Loosen one and tighten the other until the measurement is the same
- To get the blade to run in the center of the tire use the bolts at 3:00 and 9:00
- Loosen one and tighten the other 1/4 turn at a time.
- Run the machine for a few seconds and check
- Repeat until blade is centered on tire
- Tighten all four locknuts
- Adjust blade guides until the blade is 1/16 in. from back bearing

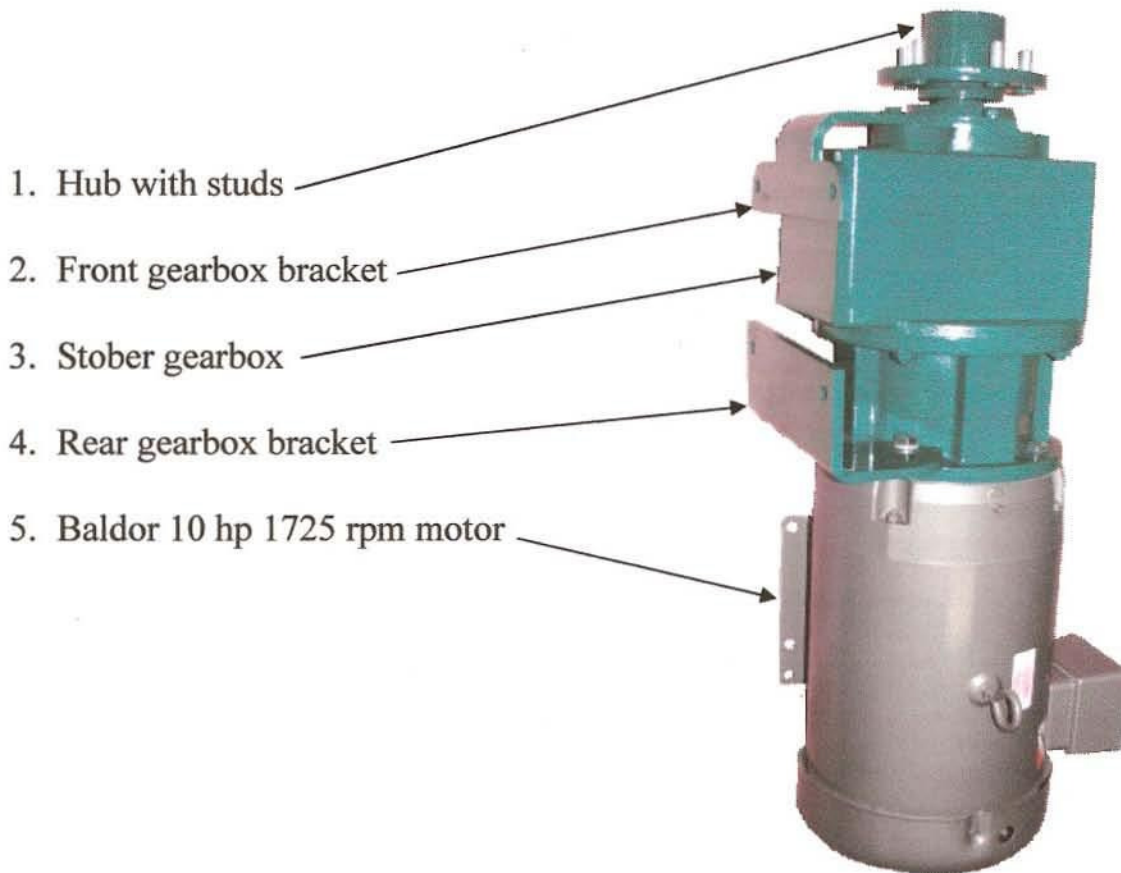
Smart Products  
DISMANTLER  
Frame and Guard



Smart Products

DISMANTLER

Motor / Gearbox

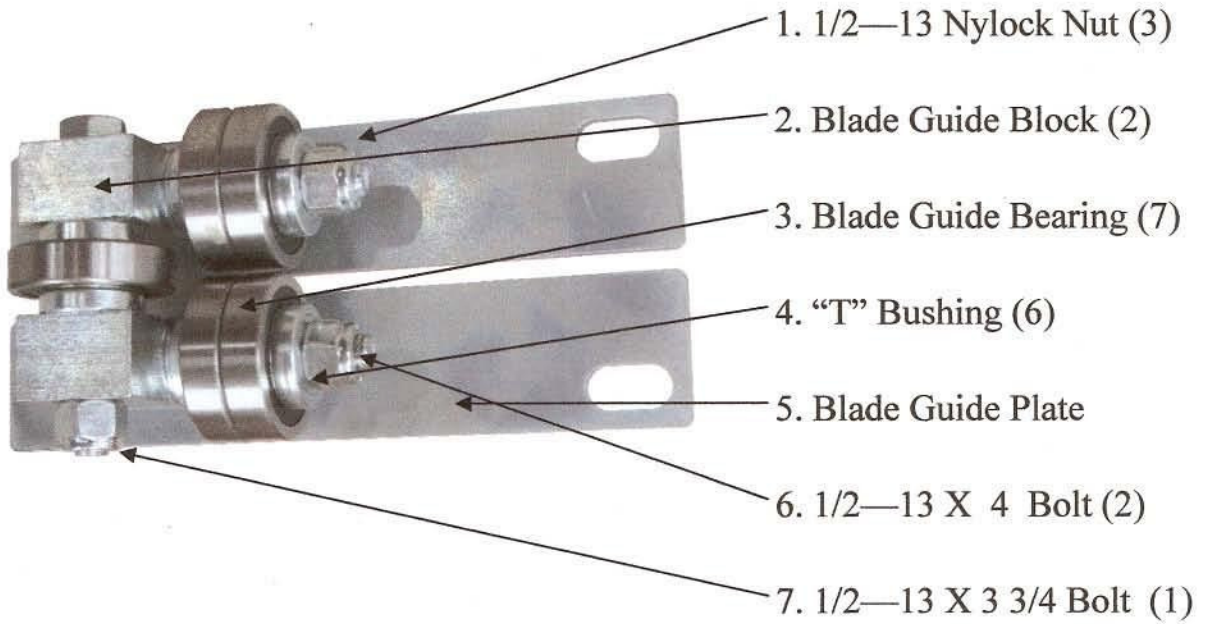




# Smart Products

## DISMANTLER

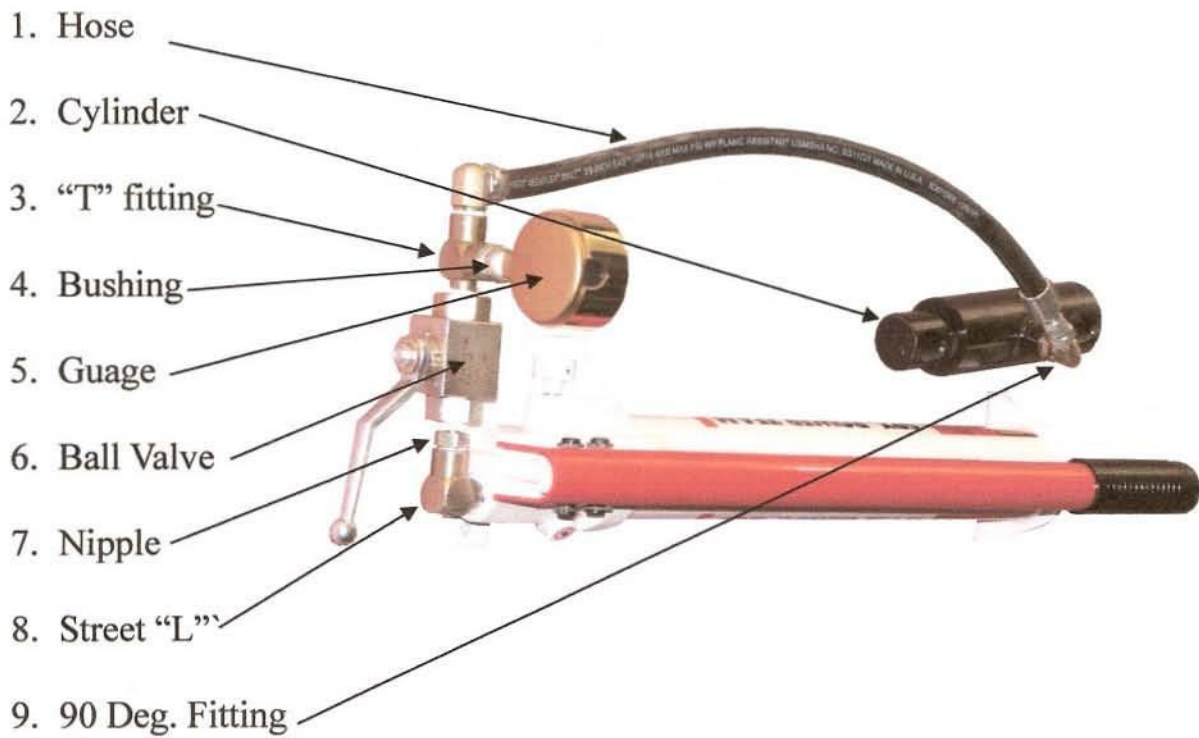
### Blade Guide Assembly (2)



# Smart Products

## Dismantler

### Blade Tensioning System



# Smart Products

## DISMANTLER

### Electrical Panel

1. Start Button

2. Stop Button

3. Fuse Block

4. Fuses

5. Disconnect

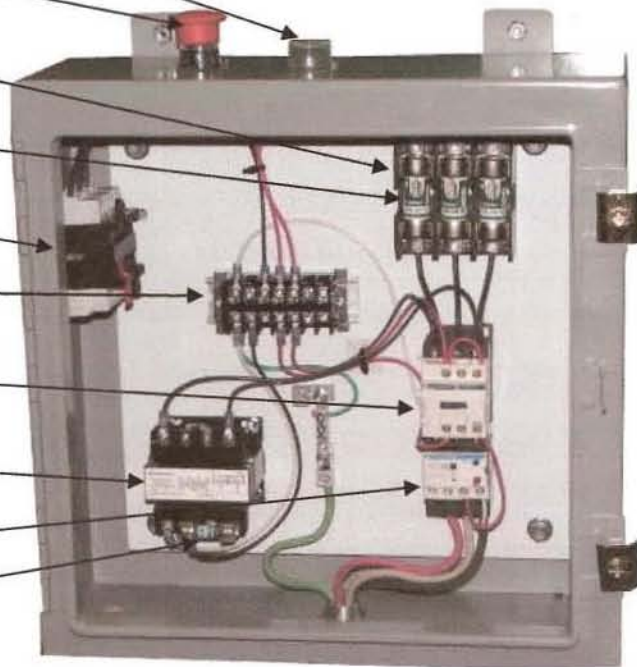
6. Terminal Strip

7. Contactor

8. Transformer

9. Thermal Overload

10. Fuse



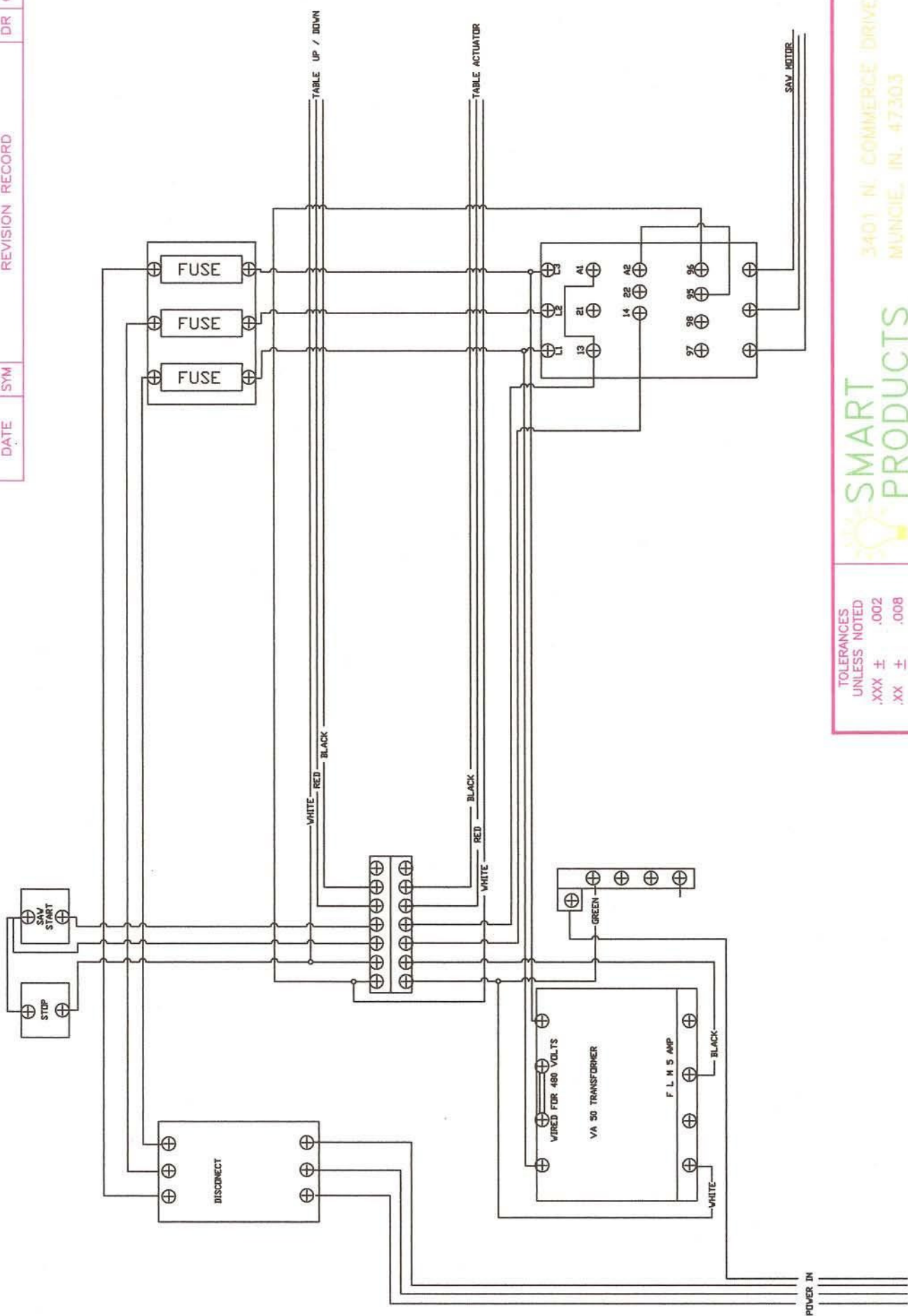
DATE

REVISION RECORD

SYM

DR

CK



TOLERANCES UNLESS NOTED

.XXX ±	.002
.XX ±	.008
.X ±	.015
FRACT. ±	1/32
ANGLE ±	.5 DEG

**SMART PRODUCTS**  
 3401 N. COMMERCE DRIVE  
 MUNCIE, IN. 47303

MODEL: DISMANTLER  
 SCALE: \_\_\_\_\_  
 DATE: 11-02-07  
 DRW. BY: TRW  
 CK BY: \_\_\_\_\_

TITLE: ELECTRIC PANEL  
 DRAWING NO.: ELECTRICAL 4  
 REVISION: A