

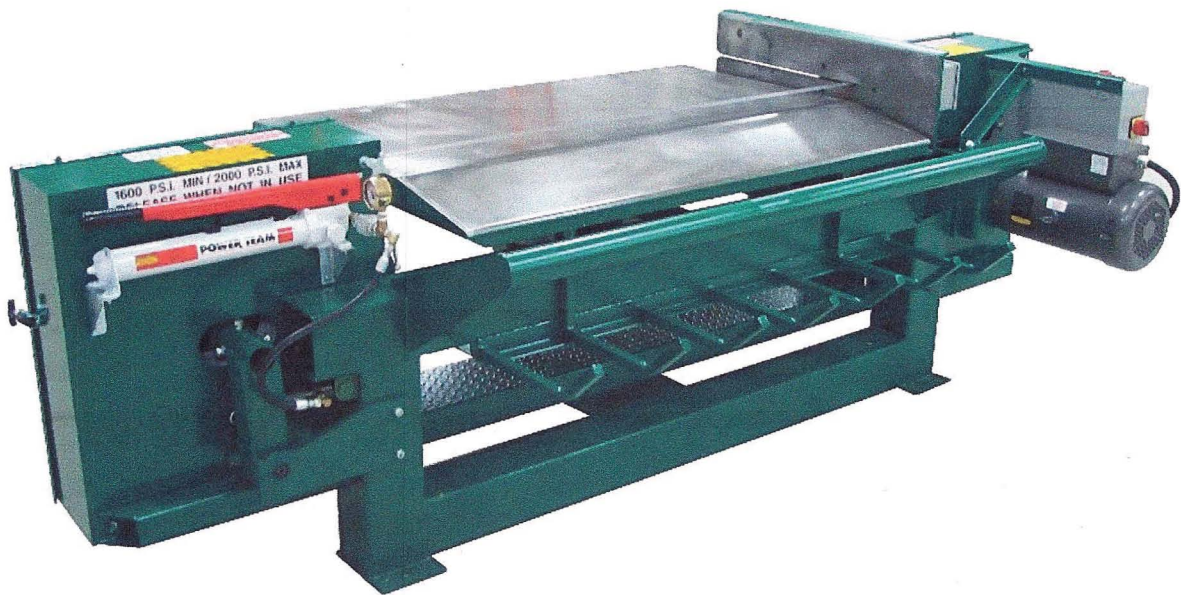


# SMART PRODUCTS

---

OPERATORS MANUAL

1-MAN DISMANTLER



3401 N. COMMERCE DRIVE  
MUNCIE, INDIANA 47303

1-800-401-0099

## Smart Products

### Pallet Dismantler

#### Installation Instructions

- Your pallet dismantler is delivered to you ready for installation, blade on.
- Verify your electrical power prior to installation.

**Caution: IMPROPER VOLTAGE MAY RESULT IN DAMAGE TO MOTOR AND OR ELECTRICAL COMPONENTS**

- A certified electrician should install power to machine.
- With the knob on the hydraulic blade tensioner closed and the ball valve in the line open, tension the blade to 2000 psi. Close ball valve.
- Turn the disconnect on the side of the electrical panel ON.
- Pull the stop button OUT.
- Start machine momentarily, check rotation. The blade should move toward the saw fence. If the blade moves away from the saw fence, have the electrician change rotation.
- You're ready to use your pallet dismantling machine, If you have any trouble with this procedure call Smart Products at 1-800-401-0099

## Smart Products

### 1-man Pallet Dismantler

#### Operating Instructions

- Tension blade to 2000 psi.
- Air pressure in tires should be 50-55 psi.
- Put on safety equipment, safety glasses, ear protection, gloves, etc.
- Pull out red stop button and start saw.
- Stop saw, turn off disconnect and remove doors.
- Check to see if blade is centered on the tires, if not go to section on changing and tracking blade
- Put doors on, turn disconnect on, pull out red stop button and start saw.
- You are ready dismantle pallets.
- Set the table about 1/4 inch lower than the board thickness.
- With about one half the pallet sticking over the blade, lower the pallet, with the blade between two boards and pull. It helps to wiggle the pallet from side to side as you pull.
- Flip the pallet over and repeat.
- Rotate the pallet and finish removing the other half of the boards.
- Flip the pallet again and remove the last boards pulling on each stringer from right to left.
- **ALWAYS STAY AT LEAST 12 INCHES FROM BLADE**

## Smart Products

### 1-man Dismantler

#### Safety Instructions

- Use a licensed electrician to hook power to your machine
- Read and understand all safety stickers and warnings
- Wear hearing and eye protection
- Do not wear loose clothing
- Keep away from blade
- Doors must be in place before operating
- Read and understand Operating Instructions
- If the blade comes off during operation, disconnect power before replacing it
- If debris gets wedged in the fence during operation, disconnect power before clearing it out
- Do not reach your hands closer than 12 inches from the blade
- Do not modify the machine in any way.

#### Specifications

- Tire air pressure 50 p.s.i
- Blade tension 2000 p.s.i.



# Smart Products

## Limited Warranty

All parts and workmanship are covered by warranty for a period of one year.

### TO QUALIFY FOR THIS WARRANTY

Any Smart Product must be purchased from the sales department of Smart Products or through authorized agents of Smart Products. Purchase from any other source will be invalid.

### WHAT SMART PRODUCTS WILL REPAIR OR REPLACE UNDER WARRANTY

Smart Products will replace any defective parts or material under normal use during the applicable warranty time period. Warranty replacements will be made without charge for parts. Anything replaced under warranty becomes the property of Smart Products and must be returned within 10 days. All parts replaced under warranty will be considered as part of the original warranty and any warranty on those parts will expire coincident with original product warranty.

### TO OBTAIN WARRANTY SERVICE

You must contact Smart Products, request warranty replacement and send defective part to Smart Products. Smart Products will send replacement part at time of request. However, in the event the defective part is not returned to Smart Products within ten (10) day time limit the part will be billed at full price. To receive replacement parts please contact:

Smart Products  
3401 North Commerce Drive  
Muncie, IN 47303  
Phone (765)284-9545 Toll Free (800) 401-0099 Fax(765) 284-7270  
Email [smartpro@smartproductsinc.com](mailto:smartpro@smartproductsinc.com)

### EXCLUSIONS

This warranty does not extend to parts or materials misused or used for any other purpose than intended or by accident and / or collision, neglect, the incorporation of, or use of, unsuitable attachments or parts, the unauthorized, alteration of any part or cause other than defects in material, workmanship or parts.

### DISCLAIMER OF CONSEQUENTIAL DAMAGE AND LIMITATION OF IMPLIED WARRANTIES

Smart Products disclaims any responsibility for loss of time or use of any equipment, transportation, commercial loss, or any other equipment, transportation, commercial loss, or any other incidental or consequential damage, any implied warranties are limited to the duration of this written limited warranty.

## INSTALLING A NEW BLADE

Unfold the new blade. Make sure the teeth are pointing in the right direction. (toward the fence)

Fig. A



- To remove the blade open the ball valve
- Open the hydraulic pump valve
- Remove the old blade
- Install the new blade and center it on the tires making sure it is in the blade guides
- Close the hydraulic pump valve
- Pump the jack to 500 PSI
- Start the machine and run for a few seconds
- Check to see if blade is centered on the tires
- If not go to Fig. B (Next Page)
- If yes check to see if the blade is 1/16 in. from rear blade guide bearing
- To adjust, loosen the blade guide adjusting knob and push the blade guide back
- Run the machine for a few seconds
- Check again to see if the blade is centered on the tires
- Adjust the blade guide till the rear bearing is 1/16 in. from back of blade
- Do this on both wheels
- Pump the pressure to 2000 psi
- Close the ball valve

## TRACKING THE BLADE

Fig. B



- To track the blade you will use these four bolts at 12, 3, 6, and 9 o'clock
- If the blade is running forward of center on the tire, loosen the blade guide adjusting handle and push the blade guides back. Do this on both wheels
- With at least 500 psi on the hydraulic pump run the machine for a few seconds, check the blade
- Loosen the lock nuts on all four bolts
- Hold a straight edge vertically on the face of the wheel and measure the distance at the top and bottom from the straight edge to the back of the cabinet. It should be the same
- If not use the bolts at 12:00 and 6:00 to correct it
- Loosen one and tighten the other until the measurement is the same
- To get the blade to run in the center of the tire use the bolts at 3:00 and 9:00
- Loosen one and tighten the other 1/4 turn at a time.
- Run the machine for a few seconds and check
- Repeat until blade is centered on tire
- Tighten all four locknuts
- Adjust blade guides until the blade is 1/16 in. from back bearing



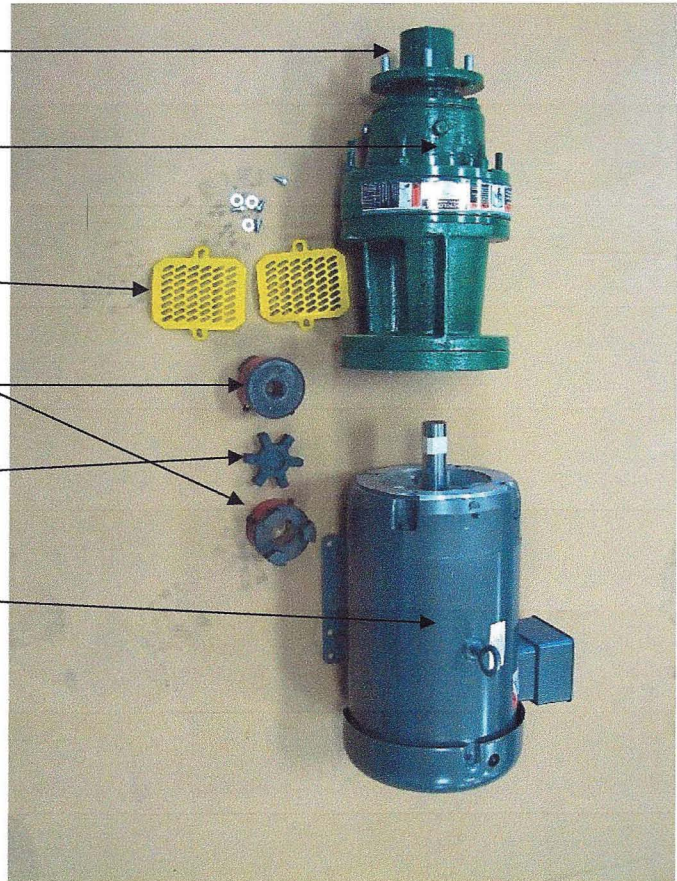
## Smart Products

### 1 MAN DISMANTLER

#### Motor / Gearbox

1. Hub
2. Sumitomo Gearbox
3. Guards
4. Lovejoy coupling halves
5. Coupling center
6. Baldor 10 hp 1725 rpm motor

motor

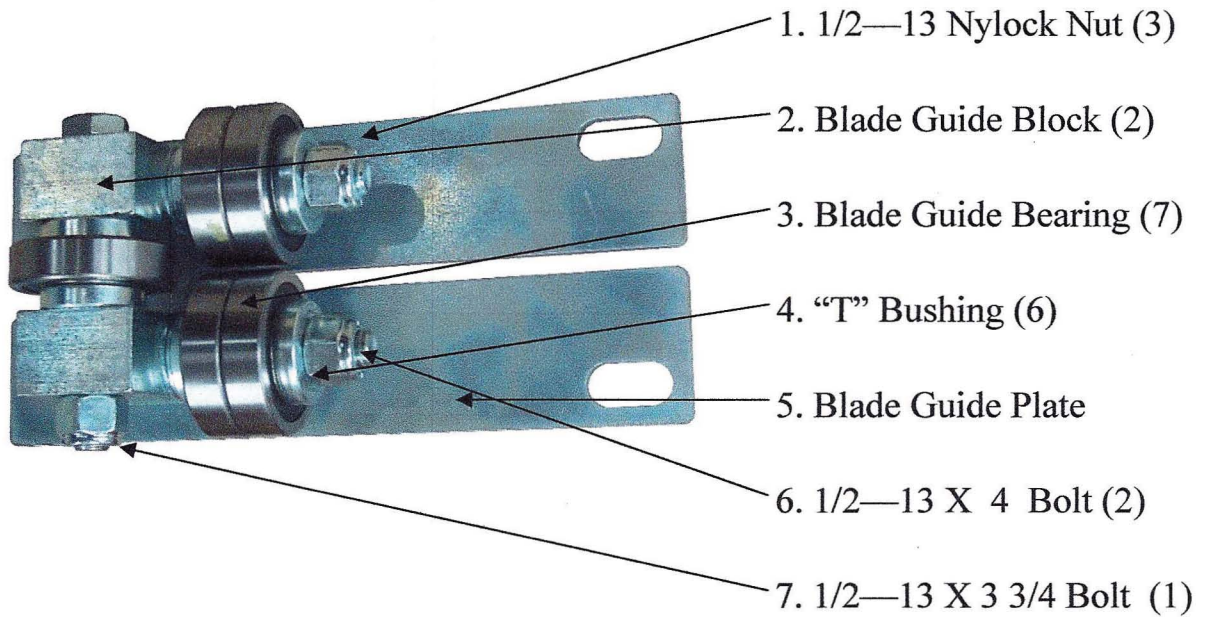




Smart Products

## DISMANTLER

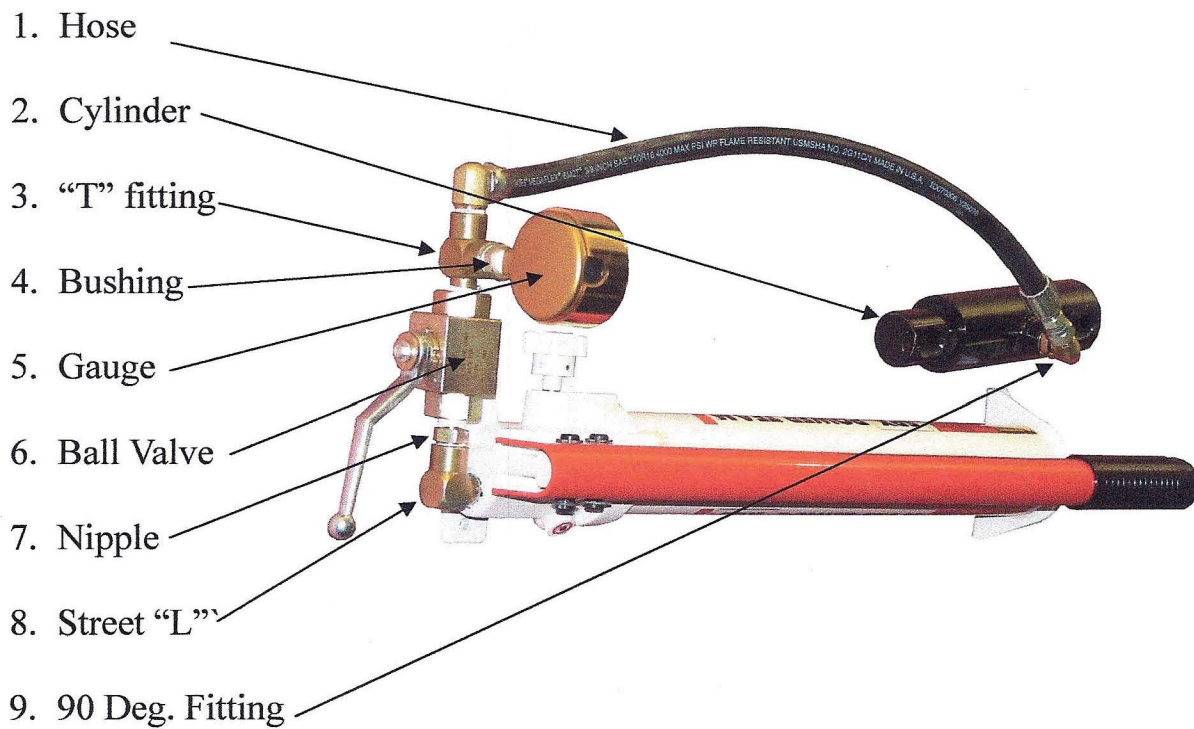
### Blade Guide Assembly (2)



# Smart Products

## Dismantler

### Blade Tensioning System



Smart Products

DISMANTLER

Electrical Panel

1. Start Button

2. Stop Button

3. Fuse Block

4. Fuses

5. Disconnect

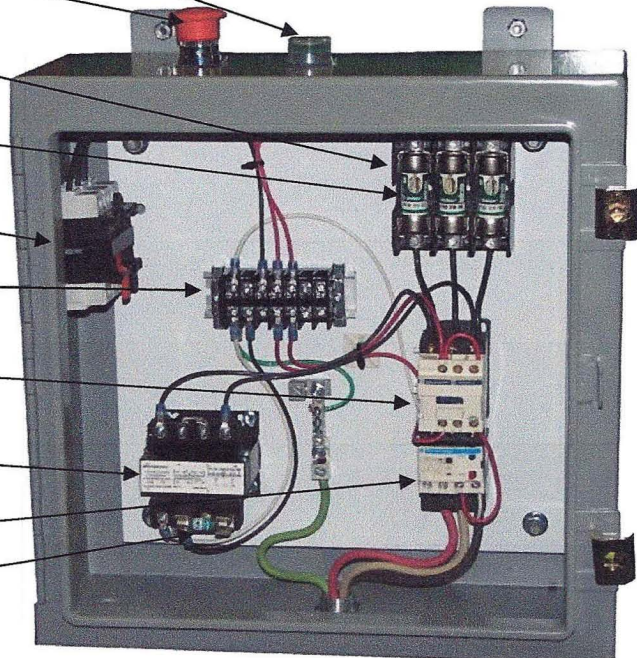
6. Terminal Strip

7. Contactor

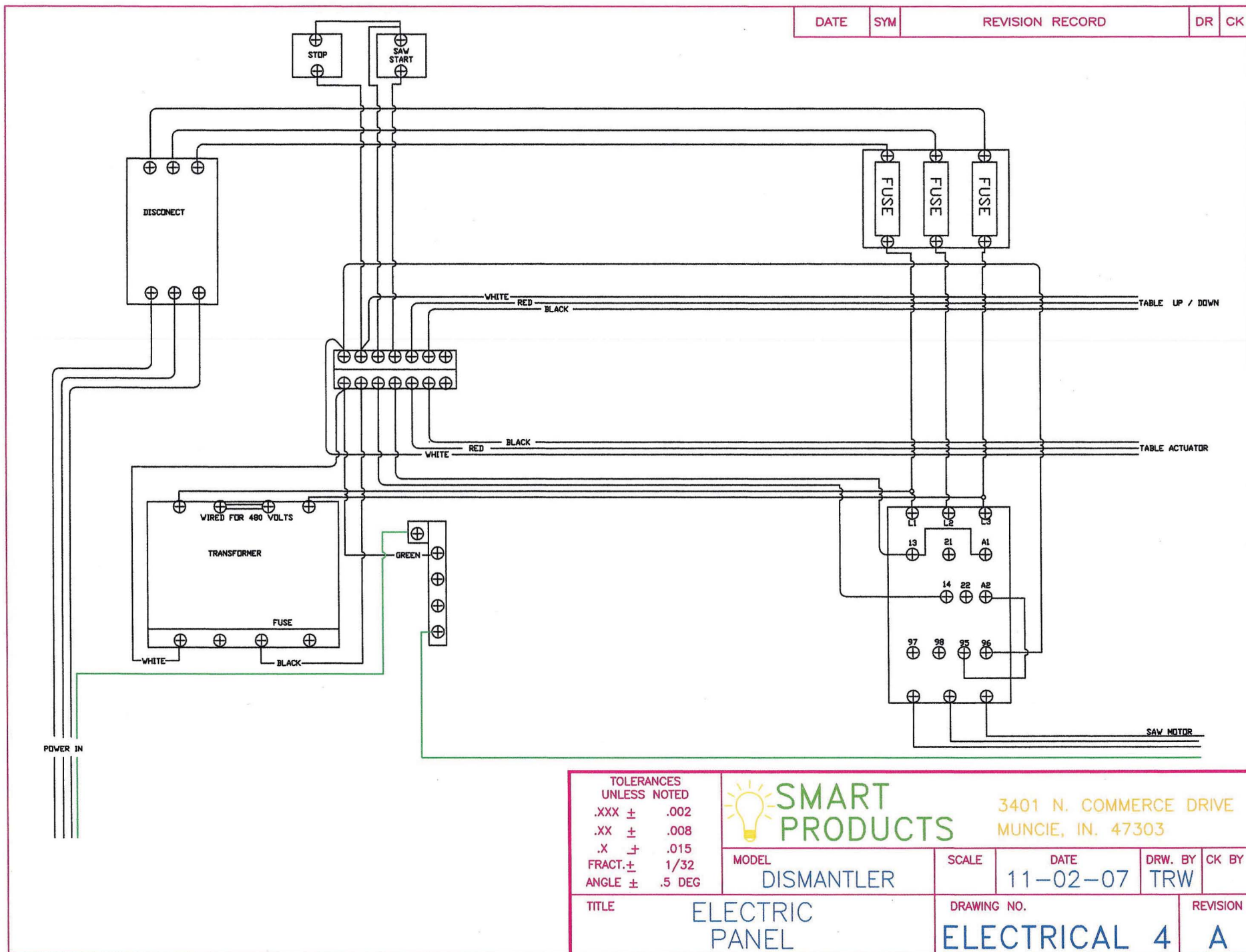
8. Transformer


9. Thermal Overload

10. Fuse







TOLERANCES UNLESS NOTED .XXX ± .002 .XX ± .008 .X ± .015 FRACT. ± 1/32 ANGLE ± .5 DEG		 <b>SMART PRODUCTS</b>		3401 N. COMMERCE DRIVE MUNCIE, IN. 47303	
MODEL <b>DISMANTLER</b>		SCALE	DATE <b>11-02-07</b>	DRW. BY <b>TRW</b>	CK BY
TITLE <b>ELECTRIC PANEL</b>		DRAWING NO. <b>ELECTRICAL 4</b>		REVISION <b>A</b>	