

Smart Products
Power Feed Trim Saw
Operators Manual



Smart Products
3401 North Commerce Drive
Muncie, Indiana 47303

Smart Products

Power Feed Trim Saw

Installation Instructions

- Your trim saw is delivered to you ready for installation, blade on.
- Verify your electrical power prior to installation.

Caution: IMPROPER VOLTAGE MAY RESULT IN DAMAGE TO MOTOR AND OR ELECTRICAL COMPONENTS

- A certified electrician should install power to machine.
- Turn the disconnect on the side of the electrical panel ON.
- Pull the stop button OUT.
- Start machine momentarily , check rotation. The blade should turn counter-clockwise looking from the operator side. If it is turning wrong have the electrician change rotation.
- You're ready to use your trim saw, If you have any trouble with this procedure call Smart Products at 1-800-401-0099

Smart Products

Power Feed Trim Saw

Operation Instructions

- Your new Power Feed Trim Saw comes with a blade installed.
- Have a licensed electrician hook up the power.
- Set board stops the desired distance from blade.
- Make sure the nut on the saw is tight.
- Hook the safety switch under the bolt on the saw guard.
- Start the saw momentarily to check rotation.
- The saw should be cutting downward.
- If the rotation is wrong have an electrician change it.
- Turn the saw on, then turn the chain conveyor on.
- **Stand on the side of the machine near the board stops.**
- Take one board at a time and place the end against the desired stop and drop it on the chain. The chain will carry it thru the saw and drop it off the end of the machine.
- The blade is 18” dia.—30 nail resistant teeth—1” dia. center hole

Smart Products

Power Feed Trim Saw

Safety Instructions

- Use a licensed electrician to hook power to your machine
- Read and understand all safety stickers and warnings
- Wear hearing and eye protection
- Do not wear loose clothing
- Keep away from blade
- Saw must be locked in the down position before operating
- Read and understand Operating Instructions
- Do not reach your hands near the blade area.
- Do not modify the machine in any way.

Smart Products

Limited Warranty

All parts and workmanship are covered by warranty for a period of one year.

TO QUALIFY FOR THIS WARRANTY

Any Smart Product must be purchased from the sales department of Smart Products or through authorized agents of Smart Products. Purchase from any other source will be invalid.

WHAT SMART PRODUCTS WILL REPAIR OR REPLACE UNDER WARRANTY

Smart Products will replace any defective parts or material under normal use during the applicable warranty time period. Warranty replacements will be made without charge for parts. Anything replaced under warranty becomes the property of Smart Products and must be returned within 10 days. All parts replaced under warranty will be considered as part of the original warranty and any warranty on those parts will expire coincident with original product warranty.

TO OBTAIN WARRANTY SERVICE

You must contact Smart Products, request warranty replacement and send defective part to Smart Products. Smart Products will send replacement part at time of request. However, in the event the defective part is not returned to Smart Products within ten (10) day time limit the part will be billed at full price. To receive replacement parts please contact:

Smart Products

3401 North Commerce Drive

Muncie, IN 47303

Phone (765)284-9545 Toll Free (800) 401-0099 Fax(765) 284-7270

Email smartpro@smartproductsinc.com

EXCLUSIONS

This warranty does not extend to parts or materials misused or used for any other purpose than intended or by accident and / or collision, neglect, the incorporation of, or use of, unsuitable attachments or parts, the unauthorized, alteration of any part or cause other than defects in material, workmanship or parts.

DISCLAIMER OF CONSEQUENTIAL DAMAGE AND LIMITATION OF IMPLIED WARRANTIES

Smart Products disclaims any responsibility for loss of time or use of any equipment, transportation, commercial loss, or any other equipment, transportation, commercial loss, or any other incidental or consequential damage, any implied warranties are limited to the duration of this written limited warranty.

Installing a new blade

POWER FEED TRIM SAW

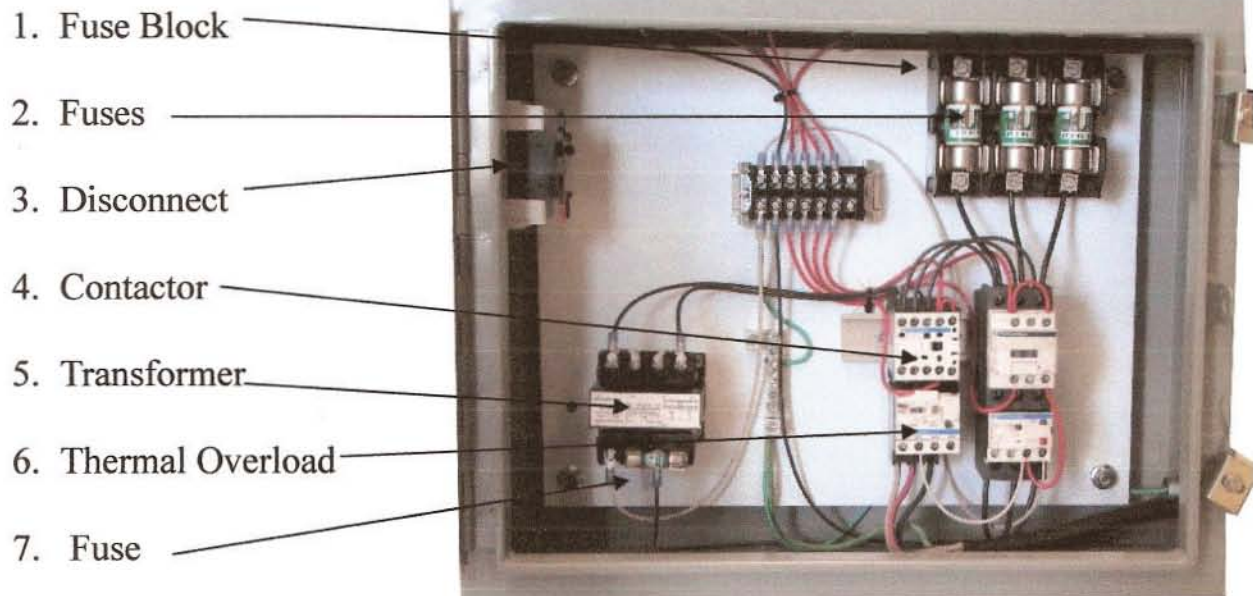
- Pull the red pin (Fig. A) with your left hand while holding the saw by the handle (Fig. B) and raise the saw till the pin snaps into the top hole.
- Remove the nuts that hold the cover on the saw, (Fig, C) remove the cover.
- Using a 1 1/2 in socket remove the nut that holds the saw blade on. This is LH thread. Turn clockwise to loosen.
- Replace blade and cover
- Pull the red pin and lower the saw till the pin snaps into the lower hole.
- Replace the arm of the safety switch under the bolt on the guard. (Fig. D.

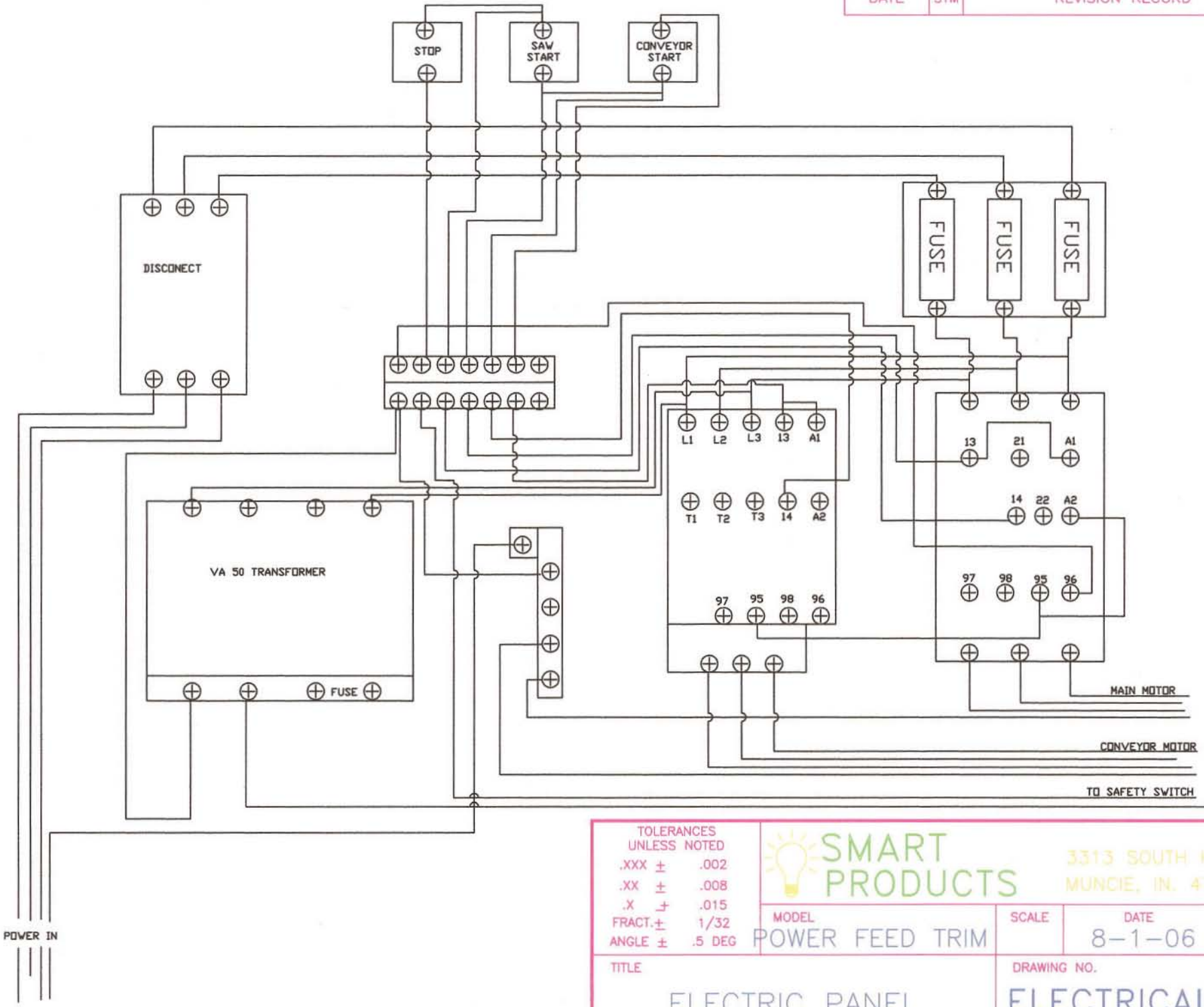


Smart Products

MANUAL TRIM SAW

Electrical Panel





<p>TOLERANCES UNLESS NOTED</p> <p>.XXX ± .002</p> <p>.XX ± .008</p> <p>.X ± .015</p> <p>FRACT. ± 1/32</p> <p>ANGLE ± .5 DEG</p>		<p>3313 SOUTH HAMILTON AVE MUNCIE, IN. 47302</p>			
		<p>MODEL POWER FEED TRIM</p>	<p>SCALE</p>	<p>DATE 8-1-06</p>	<p>DRW. BY TRW</p>
<p>TITLE ELECTRIC PANEL</p>	<p>DRAWING NO. ELECTRICAL 1</p>	<p>REVISION A</p>			